

 **MOTEURS**
Baudouin
A WEICHAI COMPANY

BUILT TO
PERFORM

POWER SOLUTIONS
FOR WORLD CLASS
TUGBOATS & WORKBOATS



BUILT TO
LAST

A CENTURY OF MARINE EXCELLENCE

For over a century, Société Internationale des Moteurs Baudouin has been at the forefront of marine propulsion and gensets technology, delivering powerful, durable, robustness and reliability to the marine world. Our products are born from a rich maritime heritage, meticulously engineered to withstand the most challenging marine environments.

Headquartered in Cassis, France, Baudouin benefits from its strategic location, which enhances our understanding of marine industry requirements and fosters innovation. This proximity to the Mediterranean allows us to stay closely connected with maritime trends and customer needs, further enriching our expertise.

Baudouin's commitment to excellence is evident in every aspect of our comprehensive range of propulsion solutions, generator sets, and auxiliary engines. Each product is a testament to our unwavering dedication to quality, adaptability, and dependability—hallmarks that have defined Baudouin since 1918.



Baudouin Headquarters - Cassis, France

BUILT TO PERFORM

POWERFUL AND RELIABLE SOLUTIONS FOR TUGBOATS

Introducing Baudouin's solutions for tugboat operations, engineered to deliver immediate response, high bollard pull performance, and dependable operation in the most demanding harbor and offshore environments.

KEY FEATURES

- **High Load Acceptance:** Rapid power delivery during towing maneuvers and sudden thrust demands.
- **High Torque Reserve:** Maintains propulsion stability and engine responsiveness during sharp load variations.
- **Heavy-Duty Design:** Robust crankshaft, bearings, and core components built to withstand extreme propeller load fluctuations.
- **PTO Ready:** Flexible integration with firefighting pumps, and auxiliary deck equipment.

Designed for continuous duty cycles, Baudouin engines combine robust construction, advanced control systems, and proven marine reliability to ensure maximum vessel availability.

- **Redundant Protection Systems:** Advanced engine monitoring and safety functions ensure propulsion availability during critical operations.
- **Continuous Duty Rated:** Class-approved ratings designed for intensive towing cycles and extended operation.
- **Low Vibration Performance:** Reduced vibration levels enhance gearbox, shaftline durability, and onboard crew comfort.
- **Flexible Integration:** Compatible with ASD, Z-drive, and conventional propulsion configurations.

CASE STUDY

BAUDOUIIN POWERS SANMAR'S NEW ELECTRA TUGBOATS FOR BOTAŞ LNG & FSRU TERMINALS

Baudouin generator sets have been selected for a new series of advanced diesel-electric tugboats built by Sanmar Shipyards for BOTAŞ. Part of Sanmar's innovative ElectRA class, these next-generation vessels combine high-performance operations with lower emissions and enhanced energy efficiency.

Classed by American Bureau of Shipping, each tug measures 25.4 m LOA, delivers 70 tons bollard pull and reaches 12 knots. The propulsion system combines Baudouin gensets (2 x 954 kW_e) with electric motors and a 5085 kWh battery energy storage system, ensuring responsive maneuverability and optimized power management, being also able to recharge the battery even while operating.

Fitted with SCR aftertreatment, the gensets comply with IMO Tier III regulations, reducing NO_x emissions for terminal operations.





By separating power generation from propulsion, the vessels operate more efficiently across varying duty cycles, reducing fuel consumption and engine wear.

Instant torque from electric motors improves precision during docking and escort missions, while battery support smooths load peaks, lowers noise and vibration, and adds valuable redundancy for critical energy infrastructure operations.



PRODUCT

2 x 12M26.3 SCR Marine gensets

CERTIFICATION

IMO Tier III

Classed by ABS

RATING

954 kW_e – 60 Hz

690 VAC

APPLICATION

Oil & gas terminal tugging



Read the full story





BUILT TO PERFORM



12M55 GENSET

16M33.3 GENSET

12M55

16M33.3

6M33.3

MARINE POWER SOLUTIONS

UP TO 2536 kW | IMO II | IMO III | EPA 3

BEST-IN-CLASS PERFORMANCE, DURABILITY, SERVICE AND WARRANTY

BAUDOUIIN MARINE ENGINES

POWER REDEFINED FOR TUGBOATS

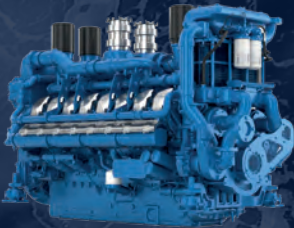
12M26.3 PROPULSION



- **Cylinders:** 12V
- **Displacement (L):** 31,8 L
- **Speed range (rpm):** 1800 - 2300
- **Power range (kW):** 883 - 1215
- **Weight (kg):** 3350

IMO III / EPA 4 / Stage V versions are also available with ATS

16M33.3 PROPULSION



- **Cylinders:** 16V
- **Displacement (L):** 52,3 L
- **Speed range (rpm):** 1600 - 1800
- **Power range (kW):** 1287 - 1545
- **Weight (kg):** 6200

12M55 PROPULSION

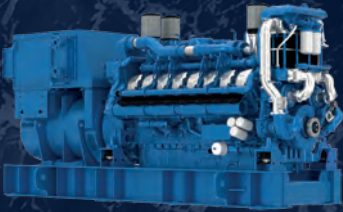


- **Cylinders:** 12V
- **Displacement (L):** 65,6 L
- **Speed range (rpm):** 1600 - 1800
- **Power range (kW):** 1800 - 2536
- **Weight (kg):** 10000

BAUDOUIIN MARINE GENSETS

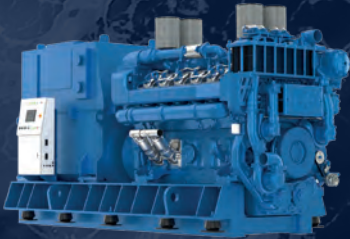
POWER REDEFINED FOR TUGBOATS

16M33.3 GENSET



- **Cylinders:** 16V
- **Displacement (L):** 52,3 L
- **Speed range (rpm):** 1500 or 1800
- **Power range (kWe):** 1100 - 1400
- **Weight (kg):** 12500

12M55 GENSET



- **Cylinders:** 12V
- **Displacement (L):** 65,6 L
- **Speed range (rpm):** 1500 or 1800
- **Power range (kWe):** 1400 - 2000
- **Weight (kg):** 17000

Please contact us to discover the full range available.

HVO

COMPATIBILITY



At Baudouin, and in parallel with electrification as previously exposed in this brochure, we recognize the importance of embracing alternative fuels to support the maritime industry's transition toward lower-emission operations. Today, a vast majority of our marine engine range is compatible with Hydrotreated Vegetable Oil (HVO).

HVO offers a seamless pathway to reduce environmental impact without requiring major modifications to existing engine installations. Compared to conventional diesel, it enables a significant reduction in lifecycle CO₂ emissions, while also contributing to lower particulate matter and NO_x emissions. From an operational standpoint, HVO maintains high combustion quality, supporting reliable engine performance, smooth operation, and consistent load response—critical factors for demanding tugboat applications.

However, as HVO fuels may vary depending on their production process and composition, Baudouin recommends engaging with our Applications team for each project. This ensures proper validation of the selected fuel and optimization of engine settings if required. In some cases, due to the lower density of HVO compared to standard diesel, a slight power derating may be observed, depending on the engine model and operating conditions.

By supporting HVO compatibility across its product portfolio, Baudouin provides a practical, immediately available solution for operators seeking to reduce emissions without compromising performance or operational reliability.



SERVICE NETWORK: YOUR TRUSTED PARTNER ON THE SEA

WHY BAUDOQUIN EXCELS IN SERVICE:

- Global network of **300+ trained technicians** in over **100 locations**
- Multilingual customer support available in **12 languages** ensuring seamless communication and assistance worldwide
- Factory-trained experts for commissioning, maintenance, repair, and overhaul
- Customized solutions for complex marine applications
- Dedicated department for specialized marine service and applications
- Data-driven approach for continuous improvement and customer satisfaction

SERVICES AND MAINTENANCE: TECHNICAL SUPPORT AND DIAGNOSTICS

- Preventative maintenance programs
- Servicing, repairs, and general overhauls
- Requalification of components
- Product training for customers and partners
- Customized solutions for specific marine applications
- Theoretical and practical training at Baudouin Training Academy in Cassis, Dubai and Singapore



SPARE PARTS AVAILABLE EVERYWHERE, ANYTIME

- **30000+** parts in stock for immediate availability
- Rapid response and genuine spare parts minimize downtime
- **24/7** comprehensive online spare parts ordering system
- Genuine parts shipped worldwide within **24 hours**





Société Internationale des Moteurs Baudouin,
Technoparc du Brégadan,
13260 Cassis, France.

Baudouin.com

Some of the engines depicted may showcase alternative configurations or optional features available at additional cost. Specifications and characteristics are based on availability and may differ. Baudouin is not liable for any printing errors, technical modifications, or discrepancies. Due to printing limitations, actual colours may vary slightly from those shown.

© Baudouin 2026