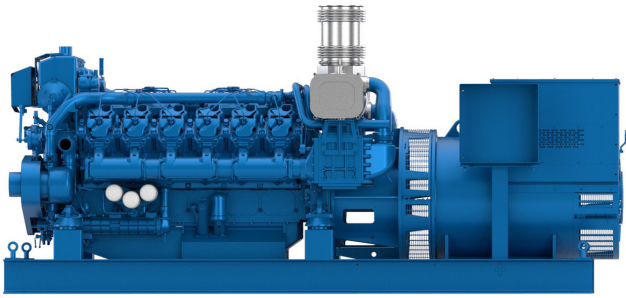


# 12M26.2

Genset Diesel Engine



Number of cylinders	12V @ 90
Bore and stroke (mm)	150 X 150
Total displacement (L)	31.8
Compression ratio	15/1
Engine rotation	counter clockwise
Idle speed	700
Flywheel	SAE 0
Flywheel housing	SAE 18"

### Customer benefits

**Continuous compact power** with reference performances in its category

**Easy service** with accessible components and unit cylinder heads

**Simple technology** with mechanical injection system

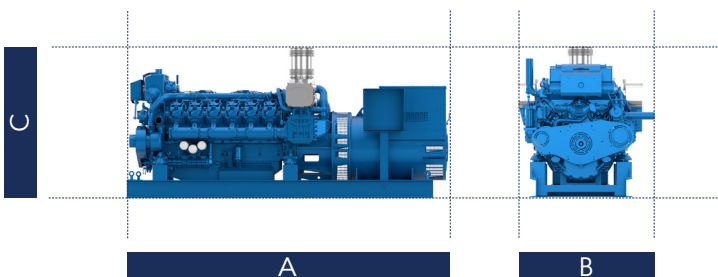
**Life cycle cost efficiency** with extended MTBO (Mean time between overhauls)

12M26.2					Fuel consumption									Emissions	
Ratings					@ 100%			@ 75%			@ 50%			IMO	EPA
Rating	Hz	kVA	kWe	RPM	kWm	g/kWh	l/h	kWm	g/kWh	l/h	kWm	g/kWh	l/h		
PRP	50	1050	840	1500	882	198	212	662	197	158	441	201	107	II	NA
PRP	60	1100	880	1800	923	207	232	692	206	173	462	215	120	II	NA

### Generator Sets Engines

Power Class		Definition
PRP	Prime Power	Unrestricted running time Time at full load ≤ 500hrs/year Load variation ≤ 75% of rated power 10% overload 1hr/12hrs

### Dimensions and dry weight (mm/kg)



Genset	A	B	C	Dry weight
1050 kVA @ 50 Hz	3933	1550	1495	6500

## Standard equipment

<b>Cooling System</b>	Two - stage cooling circuit with built - in HT thermostatic valve Integrated fresh water expansion tank High efficiency tubular heat exchanger Gear driven centrifugal raw water pump Self priming raw water pump with bronze impeller
<b>Lubrication System</b>	Full flow lube oil filters duplex type Fresh water cooled lube oil heat exchanger
<b>Fuel System</b>	Common-rail electronic injection High pressure pump with shielded high pressure injection rail and pipes Fuel oil filter duplex type External fuel pre-filter with water separator
<b>Intake Air and Exhaust System</b>	Double flow raw water cooled intake air heat exchanger module High efficiency dry turbocharger with ball bearing technology Two Stage Turbocharging system
<b>Electrical System</b>	Voltage: 24V DC insulated Electrical starter 190A battery alternator

<b>Optional Equipment</b>	Wet exhaust PTO elastic coupling Additional pulley Electric drain system Standard PTO for hydraulic pump Different alternators possible - including 12V Electrical rotary actuator
---------------------------	--

## Power definition

(Standard ISO 3046/1 - 1995 (F))

### Reference conditions

Ambient temperature	25°C / 77°F
Barometric pressure	100 kPa
Relative humidity	30%R
Raw water temperature	25°C / 77°F

### Fuel oil

Relative density	0,840 ± 0,005
Lower calorific power	42 700 kJ/kg
Consumption tolerances	+ 5%
	(DIN ISO 3046-1)
Inlet limit temperature	35°C / 95°F

### Our ratings also comply with classification societies maximum temperature definition without power derating.

Ambient temperature	45°C / 113°F
Raw water temperature	32°C / 90°F