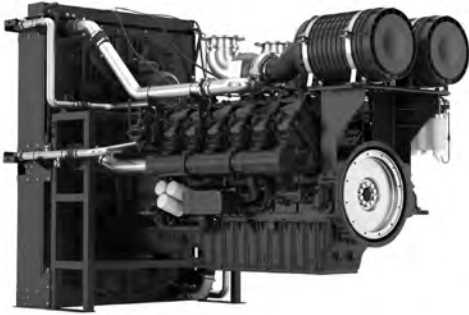


12M33

Variable Speed Engine



Customer benefits

Optimized for Variable Speed: Delivers efficient performance across a wide range of operating speeds for both stationary and mobile applications.

Effortless Maintenance: Minimizes downtime with easy access to service.

Fuel Versatility: Engineered to handle the realities of varying fuel quality.

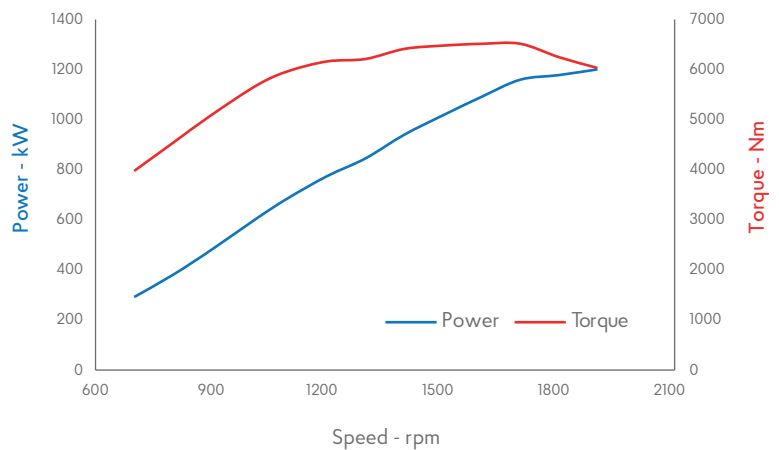
Unmatched Peace of Mind: Backed by a best-in-class warranty of 2 years / 2500 working hours for peace of mind.

Engine Model	Rated Power	Peak Torque	Displacement	Cylinders	Voltage	Aspiration	Coupling		Throttle
							FWH	FW	
12M33V6D0	1200 kW@ 1900 rpm	6516 Nm@ 1700 rpm	39.2L	V12	24V	T/A-A	SAE0	18"	ECU

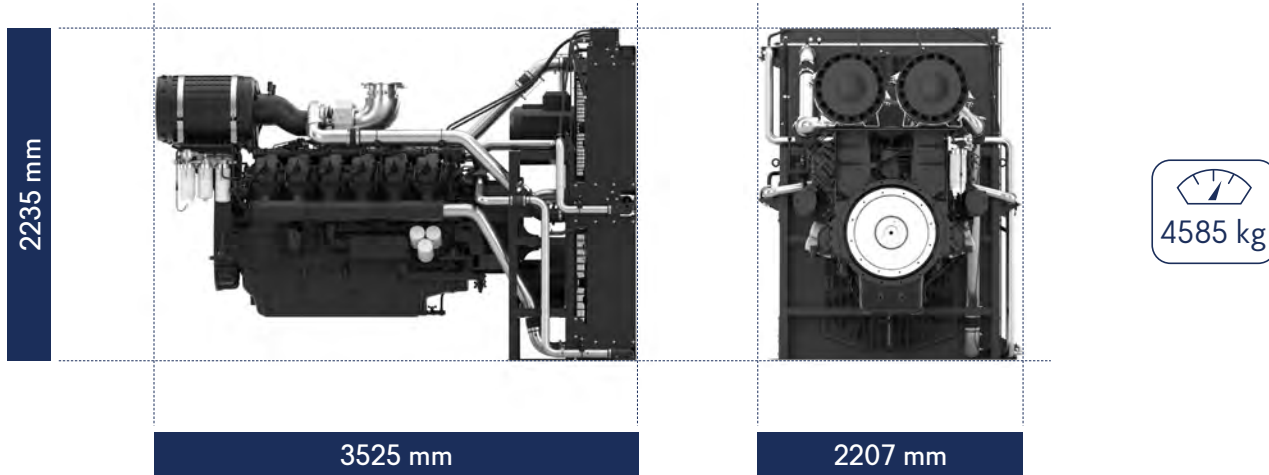
NA=Natural Aspirated, T=Turbocharged, T/A-A=Turbocharged & Air to Air aftercooled, T/A-W=Turbocharged & Air to Water aftercooled

Torque Curve

rpm	Nm	kW
1900	6033	1201
1800	6249	1178
1700	6516	1160
1600	6515	1092
1500	6479	1018
1400	6413	940
1299	6212	845
1200	6164	775
1100	5972	688
1020	5698	609
899	5089	479
800	4537	380
700	3979	292



Dimensions and dry weight



Standard equipment

Engine and block

Cast iron block
 One-piece forged crankshaft
 Individual cast iron cylinder heads and wet liners
 Aluminum alloy pistons with oil cooling gallery

Cooling system

Radiator and hoses supplied directly mounted on the engine together with a pusher fan air cooling

Lubrication system

Flat bottom large capacity oil pan
 Spin-on full-flow lube oil filter

Fuel system

Optimum performance and efficient use of fuel for continuous duty
 Duplex fine filter for better efficiency

Air intake and exhaust system

Special rear mounted air filter with restriction indicator
 Exhaust manifold shield for heat isolating