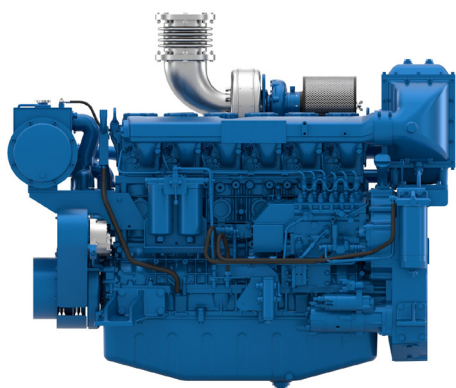




6M16

Propulsion Diesel Engine



Number of cylinders	6 in line
Bore and stroke (mm)	126 X 130
Total displacement (L)	9.7
Compression ratio	17/1
Engine rotation	counter clockwise
Idle speed	600
Flywheel	SAE 1
Flywheel housing	SAE 14"

Customer benefits

Compact size with one of the best in class power outputs

Controlled fuel consumption with low exhaust emissions at any running cycles

Life cycle cost efficiency with extended mean time between overhauls

Easy maintenance as the engine is equipped with simple mechanical injection

Rated power - Fuel consumption

Duty	kW	HP	RPM	Fuel consumption			IMO	EPA
				Optimum value	Rated power			
				g/kWh	g/kWh	l/h		
P1	240	326	2100	214	218	61	II	-
P2	264	359	2100	206	225	69	II	-

	P1	P2
Application	Unrestricted Continuous	Continuous
Engine load variations	Very Little To None	Continuous
Average Engine load factor	80-100%	30-80%
Annual working time	More Than 5000 H	3000 -5000 H
Time at full load	Unlimited	8h Each 12h

P1 Continuous Duty

- Deep sea trawlers
- Shrimps trawlers
- Sea going tug boats
- River tug boats
- Push boats
- Freighters
- Dredges
- LCT
- Ferries

P2 Heavy Duty

- Deep sea trawlers
- Shrimps trawlers
- Sea going tug boats
- River tug boats
- Push boats
- Freighters
- Dredges
- LCT
- Ferries

P3 Intermittent Duty

- Seasonal passenger vessels
- Fishing boats
- Pilot boats
- Commercial pleasure boats
- Pump boats
- Displacement sailboats
- Trawlers
- Bow thrusters

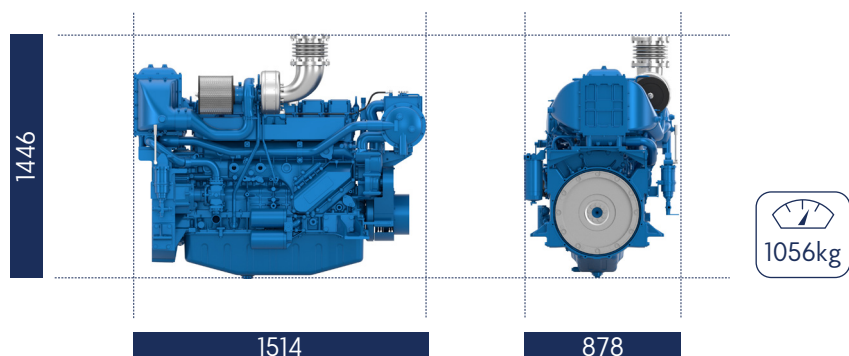
P4 Light Duty

- Private pleasure boats
- Multi-hull pleasure boats
- Survey or rescue fast vessels
- Military fast vessels.

P5 High performance Duty

- Private pleasure boats
- Multi-hull pleasure boats

Dimensions and dry weight (mm/kg)



Standard equipment

Cooling System

Two - stage cooling circuit with built - in HT thermostatic valve
Integrated fresh water expansion tank
High efficiency tubular heat exchanger
Gear driven centrifugal fresh water pump
Self priming raw water pump with bronze impeller

Lubrication System

Full flow lube oil filters duplex type
Fresh water cooled lube oil heat exchanger

Fuel System

Common-rail electronic injection
High pressure pump with shielded high pressure injection rail and pipes
Fuel oil filter duplex type
External fuel pre-filter with water separator

Intake Air and Exhaust System

Double flow raw water cooled intake air heat exchanger module
High efficiency dry turbocharger with ball bearing technology
Two Stage Turbocharging system

Electrical System

Voltage: 24V DC insulated
Electrical starter
190A battery alternator

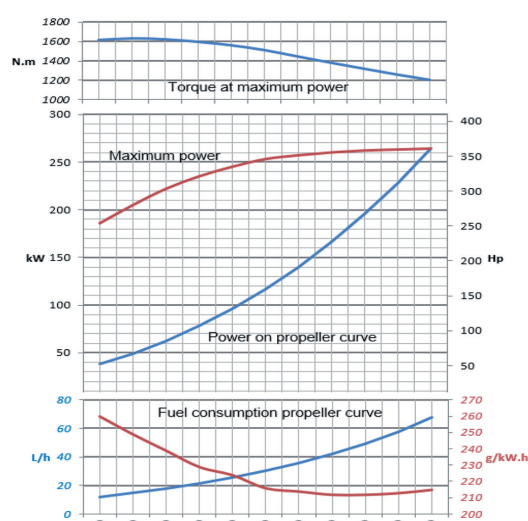
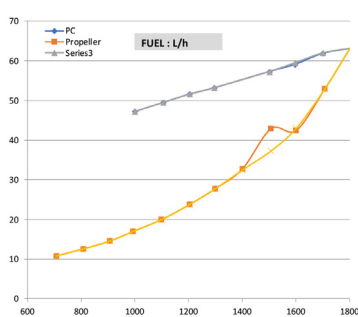
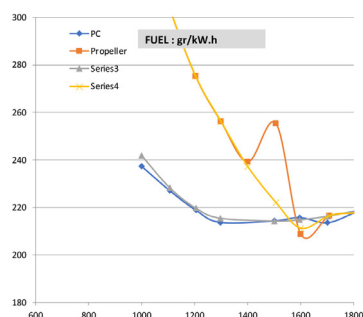
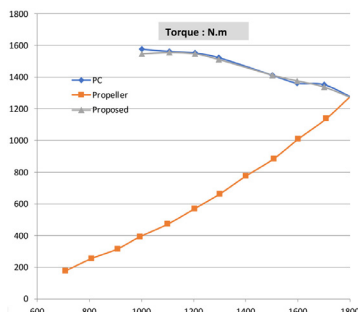
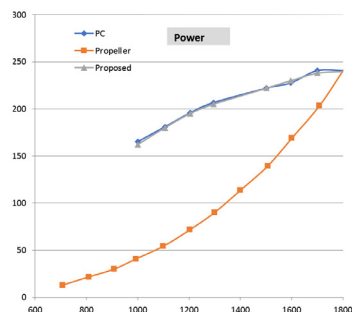
Optional Equipment

Wet exhaust
PTO elastic coupling
Additional pulley
Electric drain system
Standard PTO for hydraulic pump
Different alternators possible - including 12V
Electrical rotary actuator

Performance

P1 - 240kW - 326hp @2100rpm

P2 - 264kW - 360hp @2100rpm



Power definition

(Standard ISO 3046/1 - 1995 (F))

Reference conditions

Ambient temperature	25°C / 77°F
Barometric pressure	100 kPa
Relative humidity	30%R
Raw water temperature	25°C / 77°F

Fuel oil

Relative density	0,840 ± 0,005
Lower calorific power	42 700 kJ/kg
Consumption tolerances	+ 5%
	(DIN ISO 3046-1)
Inlet limit temperature	35°C / 95°F

Our ratings also comply with classification societies maximum temperature definition without power derating.

Ambient temperature	45°C / 113°F
Raw water temperature	32°C / 90°F