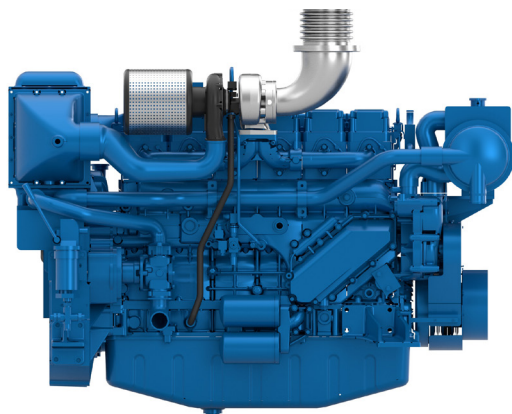


# 6W126S

Auxiliary Diesel Engine



Number of cylinders	6
Bore and stroke (mm)	126 X 155
Total displacement (L)	11.6
Cylinders	L6
Engine rotation	Counter clockwise
Idle speed	650
Flywheel	SAE 1
Flywheel housing	SAE 14"

6W126S				Fuel Consumption		Emissions
Ratings	kWm	HP	RPM	g/kWh	l/h	IMO
PRP	290	394	1500	198	68	II
PRP	300	408	1800	199	71	II

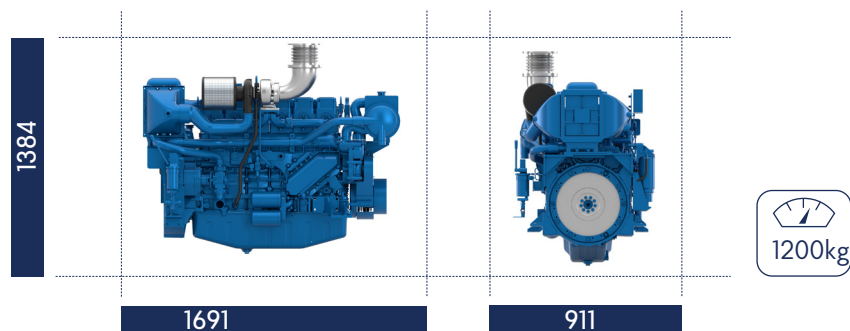
### Generator Sets Engines

Power Class		Definition
PRP	Prime Power	Unrestricted running time Time at full load $\leq$ 500hrs/year Load variation $\leq$ 75% of rated power 10% overload 1hr/12hrs

### Baudouin's Engine DNA: Genuine Marine Power, Efficiency & Reliability

Our genuine marine engine design is specifically engineered for marine applications, ensuring durability, performance, and seamless integration in the most demanding environments. Designed for easy maintenance, our engines feature individual cylinder heads, allowing for quick servicing and minimal downtime to ensure uninterrupted operations. Built with key components made from highly durable materials, our engines guarantee long-term reliability and endurance in every condition.

### Dimensions and dry weight (mm/kg)



## Standard equipment

### Cooling System

Fresh/Raw water exchanger with integrated thermostatic valves and expansion tank  
Cast Iron centrifugal fresh water pump, belt driven Self-priming raw water pump, mechanically driven

### Lubrication System

Full Flow screwable oil filter  
fresh water cooled lube oil cooler

### Fuel system

Duplex full filters replaceable engine running  
Water separator  
Double wall injection bundle

### Intake air and Exhaust system

Exhaust gas manifold cooled by the engine fresh water  
Turbo blower with insulated turbine housing  
Low water temperature cooled intake air cooler

### Electrical system

Voltage 24Vdc  
Electrical Starter on flywheel crown  
55A battery charger

### Optional Equipment

Keel cooling  
configuration Front PTO  
Wet exhaust  
Elastic Pads

## Power definition

(Standard ISO 3046-1:2002)

### Reference conditions

Ambient temperature	25°C / 77°F
Barometric pressure	100 kPa
Relative humidity	30%R
Raw water temperature	25°C / 77°F

### Fuel oil

Relative density	0,840 ± 0,005
Lower calorific power	42 700 kJ/kg
Consumption tolerances	± 5%
Inlet limit temperature	35°C / 95°F

**Our ratings also comply with classification societies maximum temperature definition without power derating.**

Ambient temperature	45°C / 113°F
Raw water temperature	32°C / 90°F