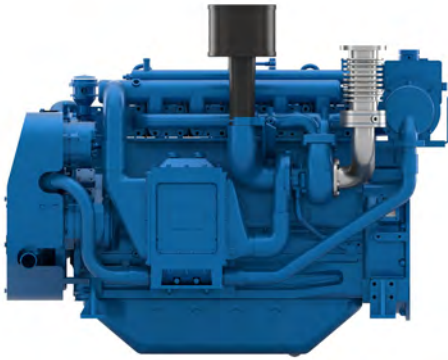


6W105S

Auxiliary Diesel Engine



Number of cylinders	6
Bore and stroke (mm)	105 X 130
Total displacement (L)	6.7
Cylinders	L6
Engine rotation	Counter clockwise
Idle speed	650
Flywheel	SAE 3
Flywheel housing	SAE 11.5"

6W105S				Fuel Consumption		Emissions
Ratings	kWm	HP	RPM	g/kWh	l/h	IMO
PRP	125	170	1500	197	29	II
PRP	144	196	1800	196	33	II

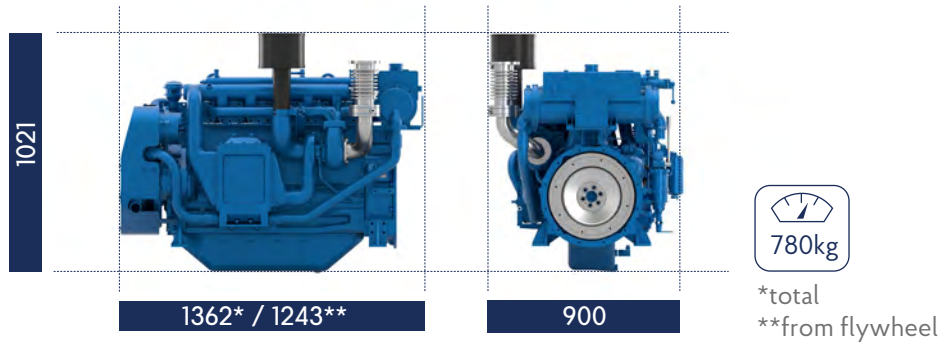
Generator Sets Engines

Power Class		Definition
PRP	Prime Power	Unrestricted running time Time at full load \leq 500hrs/year Load variation \leq 75% of rated power 10% overload 1hr/12hrs

Baudouin's Engine DNA: Genuine Marine Power, Efficiency & Reliability

Our genuine marine engine design is specifically engineered for marine applications, ensuring durability, performance, and seamless integration in the most demanding environments. Designed for easy maintenance, our engines feature individual cylinder heads, allowing for quick servicing and minimal downtime to ensure uninterrupted operations. Built with key components made from highly durable materials, our engines guarantee long-term reliability and endurance in every condition.

Dimensions and dry weight (mm/kg)



Standard equipment

Cooling System

Integrated fresh water expansion tank
High efficiency tubular heat exchanger
Gear driven centrifugal raw water pump
Self priming raw water pump

Lubrication System

Full flow lube oil filters simple type
Fresh water cooled lube oil heat exchanger

Fuel System

Mechanical injection
Fuel oil filter duplex type
External fuel pre-filter with water separator
Double wall injection bundle

Intake Air and Exhaust System

Dry single stage turbocharger

Electrical System

Voltage: 24V DC insulated
Electrical starter
55A battery charger

Optional Equipment

Keel Cooling configuration
Wet exhaust
Elastic pads

Power definition

(Standard ISO 3046-1:2002)

Reference conditions

Ambient temperature	25°C / 77°F
Barometric pressure	100 kPa
Relative humidity	30%R
Raw water temperature	25°C / 77°F

Fuel oil

Relative density	0,840 ± 0,005
Lower calorific power	42 700 kJ/kg
Consumption tolerances	± 5%
Inlet limit temperature	35°C / 95°F

Our ratings also comply with classification societies maximum temperature definition without power derating.

Ambient temperature	45°C / 113°F
Raw water temperature	32°C / 90°F