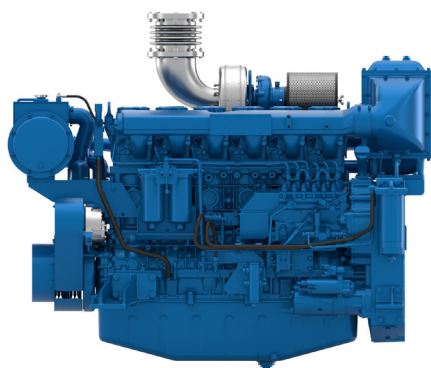


6M16

Auxiliary Diesel Engine



Number of cylinders	6 in line
Bore and stroke (mm)	126 X 130
Total displacement (L)	9.7
Compression ratio	17/1
Engine rotation	counter clockwise
Idle speed	600
Flywheel	SAE 1
Flywheel housing	SAE 14"

Customer benefits

Continuous compact power with reference performances in its category

Easy service with accesible components and unit cylinder heads

Simple technology with mechanical injection

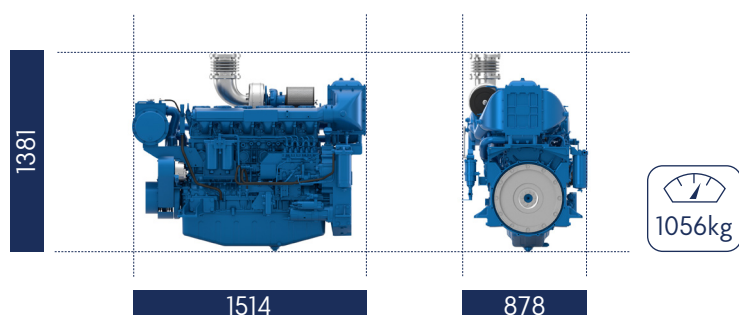
Life cycle cost efficiency with extended MTBO (Mean time between overhauls)

6M16				Fuel consumption		Emissions
Rating	HP	kW (PRP)	RPM	g/kWh	l/h	IMO
PRP	279	205	1500	200	49	II
PRP	303	223	1800	211	56	II

Generator Sets Engines

Power Class		Definition
PRP	Prime Power	Unrestricted running time Time at full load \leq 500hrs/year Load variation \leq 75% of rated power 10% overload 1hr/12hrs

Dimensions and dry weight (mm/kg)



Standard equipment

Cooling System

Two - stage cooling circuit with built - in HT thermostatic valve
Integrated fresh water expansion tank
High efficiency tubular heat exchanger
Gear driven centrifugal raw water pump
Self priming raw water pump with bronze impeller

Lubrication System

Full flow lube oil filters duplex type
Fresh water cooled lube oil heat exchanger

Fuel System

Common-rail electronic injection
High pressure pump with shielded high pressure injection rail and pipes
Fuel oil filter duplex type
External fuel pre-filter with water separator

Intake Air and Exhaust System

Double flow raw water cooled intake air heat exchanger module
High efficiency dry turbocharger with ball bearing technology
Two Stage Turbocharging system

Electrical System

Voltage: 24V DC insulated
Electrical starter
190A battery alternator

Optional Equipment

Wet exhaust
PTO elastic coupling
Additional pulley
Electric drain system
Standard PTO for hydraulic pump
Different alternators possible - including 12V
Electrical rotary actuator

Power definition

(Standard ISO 3046/1 - 1995 (F))

Reference conditions

Ambient temperature	25°C / 77°F
Barometric pressure	100 kPa
Relative humidity	30%R
Raw water temperature	25°C / 77°F

Fuel oil

Relative density	0,840 ± 0,005
Lower calorific power	42 700 kJ/kg
Consumption tolerances	+ 5%
	(DIN ISO 3046-1)
Inlet limit temperature	35°C / 95°F

Our ratings also comply with classification societies maximum temperature definition without power derating.

Ambient temperature	45°C / 113°F
Raw water temperature	32°C / 90°F