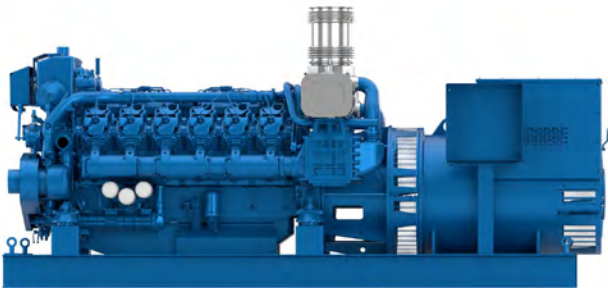


# 12M26.2

Marine Generator Set



Number of cylinders	12
Bore and stroke (mm)	150 X 150
Total displacement (L)	31.8
Cylinders	V12
Engine rotation	Counter clockwise
Idle speed	650
Flywheel	18"
Flywheel housing	SAE 0

### Rating table

Ratings					Fuel Consumption						Emissions
					@ 100%		@ 75%		@ 50%		IMO
Rating	Hz	kVA	kWe	RPM	g/kWh	l/h	g/kWh	l/h	g/kWh	l/h	
PRP	50	665	532	1500	206	138	231	116	242	81	II
PRP	50	800	640	1500	210	169	212	128	223	90	II
PRP	50	915	732	1500	199	182	204	140	214	98	II
PRP	50	975	780	1500	207	202	207	152	215	105	II
PRP	50	1050	840	1500	201	210	201	158	208	109	II

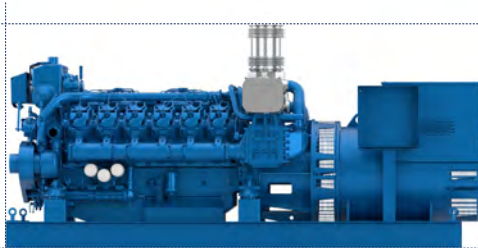
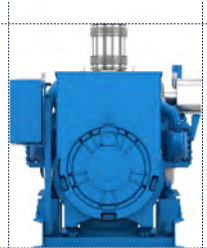
### Generator Sets Engines

Power Class		
PRP	Prime Power	Unrestricted running time Time at full load $\leq$ 500hrs/year Load variation $\leq$ 75% of rated power 10% overload 1hr/12hrs

### Baudouin's Engine DNA: Genuine Marine Power, Efficiency & Reliability

Our genuine marine engine design is specifically engineered for marine applications, ensuring durability, performance, and seamless integration in the most demanding environments. Designed for easy maintenance, our engines feature individual cylinder heads, allowing for quick servicing and minimal downtime to ensure uninterrupted operations. Built with key components made from highly durable materials, our engines guarantee long-term reliability and endurance in every condition.

## Dimensions and dry weight (mm/kg)

H				
	L		W	
L (mm)	W (mm)	H (mm)	Weight (Kg)	
3717-3961	1578-1581	1839-1889	5398-6400	

## Standard equipment

### Cooling System

Fresh / raw water heat exchanger with integrated thermostatic valves and expansion tank

Cast iron centrifugal fresh water pump, belt driven

Bronze self-priming raw water pump, belt driven

### Lubrication System

Full flow screwable oil filter

Lube oil purifier with replaceable cartridge

Fresh water cooled lube oil cooler

### Fuel System

Double wall injection bundle with leakage collector

Duplex fuel filters replaceable engine running

### Intake Air and Exhaust System

Fresh water cooled turbo blower

Double flow raw water cooled intake air cooler

### Electrical System

Voltage: 24V DC insulated

Electrical starter

Double flow raw water cooled intake air cooler

175A battery charger

### Optional Equipment

Keel Cooling configuration

Front PTO

Additional pulley

Electric drain pump

Air starter

### Generator

50/60 Hz frequency, 4 poles

Insulation / heating class H/H

Electronic voltage regulation

Brushless excitation

IP23 Protection, marine impregnation

Double bearing

### Power definition

(Standard ISO 3046-1:2002)

#### Reference conditions

Ambient temperature	25°C / 77°F
Barometric pressure	100 kPa
Relative humidity	30%R
Raw water temperature	25°C / 77°F

#### Fuel oil

Relative density	0,840 ± 0,005
Lower calorific power	42 700 kJ/kg
Consumption tolerances	0 ± 5%
	(DIN ISO 3046-1)
Inlet limit temperature	35°C / 95°F

**Our ratings also comply with classification societies maximum temperature definition without power derating.**

Ambient temperature	45°C / 113°F
Raw water temperature	32°C / 90°F